

UGFFP260-6

Awaiting Image

Physical Specification

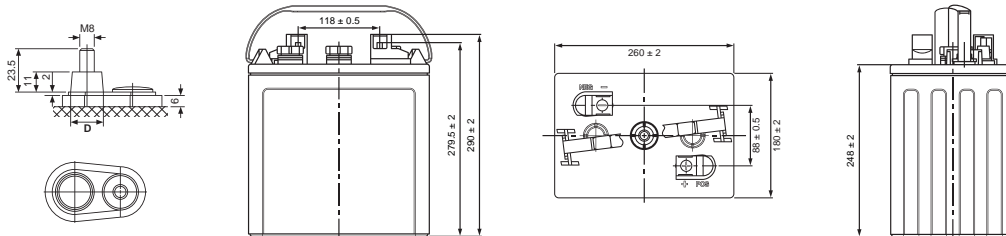
Part Number	UGFFP260-6
Length	260 ± 2 mm
Width	180 ± 2 mm
Container Height	248 ± 2 mm
Total Height (with terminal)	279.5 ± 2 mm
Approx Weight Dry / Wet	22.0 kg / 29.0 kg

Specifications

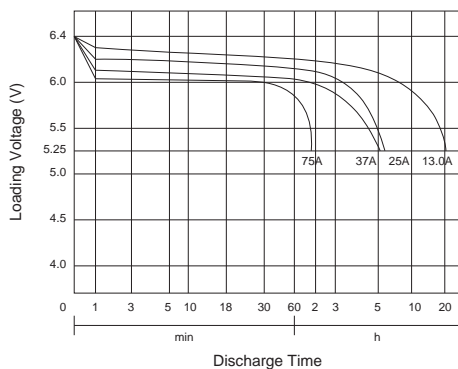
	Nominal Voltage	6V
	Nominal Capacity (20HR)	260AH
	Nominal Capacity (5HR)	215AH
Terminal Type	Standard Terminal	LPT
Container Materials		PP
Rated Capacity	20 hour rate (13.0A)	260Ah
	5 hour rate (43.0A)	215Ah

Standard Terminal (mm) / Dimensions (mm)

LPT Terminal



Discharge Characteristics (20°C)



Charge Method

Initial Charge:

0.1C (A) charging 15h 0.05C (A) charging 10h The temperature of the battery should be below 50° during charging.

Supplement Charge:

a) Charging at a constant voltage of 7.35~7.5V/cell and a limited current 0.25C (A) until the electrolyte 20 density up to 1.280g/cm³ (30) and the current not change for 3 hours.

b) Charge with constant current 0.1C (A) until the 20 voltage between 7.8~8.4V/cell, and voltage maintains for 3 hours and not change. Two method optional

Revised: 24 Jul 2014

ALL DATA IS SUBJECT TO CHANGE WITHOUT NOTICE